



# CONSTRUCTION MATERIALS

## TECHNOLOGIES

### LABORATORY TEST REPORT

**Report for:** JMB Industries, LLC  
6340 Baker Blvd.  
Richland Hills, TX 76118

**Attention:** Jim Brown

<b>Product Name:</b> Pipe Prop® Plastic	<b>Manufacturer:</b> JMB Industries, LLC
<b>Project No.:</b> JMB-003-02-02	<b>Source:</b> JMB Industries, LLC
<b>Date Received:</b> July 7, 2015	<b>Date Tested:</b> July 27, 2015

**Purpose:** Determine the water absorption of the plastic used with the Pipe Prop®. The APS-1 saddle, APS-2 saddle, and APS-1/-2 base were assessed.

**Test Methods:** Testing was conducted in accordance with IAPMO IGC 298-2013 *Rooftop Support Blocks for Piping and Mechanical Equipment* and ASTM D 570: *Standard Test Method for Water Absorption of Plastics*, Section 7.1: *Twenty-Four Hour Immersion* procedure. Testing was modified to test the entire molded plastic parts in whole. The samples were conditioned for 24 hours at 122°F. Testing was conducted at 73.4°F using deionized water.

**Sampling:** Product samples provided by JMB Industries were received on July 7, 2015.

**Specimen:** For this testing, the Pipe Prop® APS-1 and APS-2 components were tested individually, and without Schedule 40 PVC pipe.

JMB-003-02-02 PRI-CMT Accreditations: IAS TL-189; Miami-Dade 11-0429.05; Florida TST5878; Los Angeles TA24819; CRRC


The test results, opinions, or interpretations are based on the material supplied by the client. This report is for the exclusive use of stated client. No reproduction or facsimile in any form can be made without the client's permission. This report shall not be reproduced except in full without the written approval of this laboratory. PRI Construction Materials Technologies, LLC assumes no responsibility nor makes a performance or warranty statement for this material or products and processes containing this material in connection with this report

**Results:** Table 1: Water Absorption Results for Pipe Prop® APS-1 and APS-2

Sample	Results		
	Specimens	Average (% Weight)	St.Dev. (% Weight)
APS-1 Saddle	1	0.20	-
APS-2 Saddle	1	0.20	-
APS-1/-2 Base	2	0.16	-

**Statement of Attestation:**

Testing was conducted in accordance with IAPMO IGC 298-2013 *Rooftop Support Blocks for Piping and Mechanical Equipment* as described herein. The laboratory test results presented in this report are representative of the material supplied.

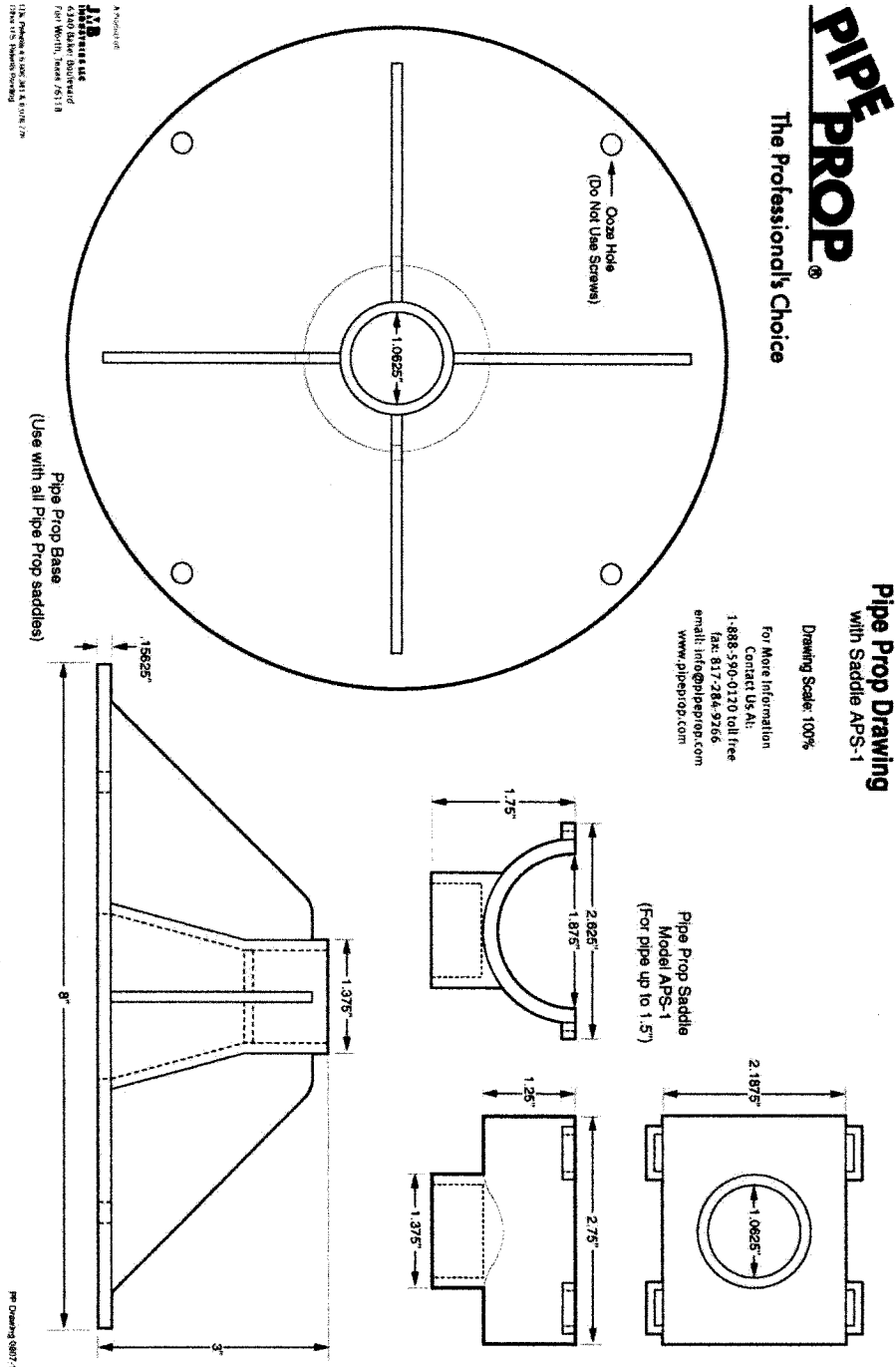
Signed:   
 Zachary Priest, P.E.  
 Director

**Report Issue History:**

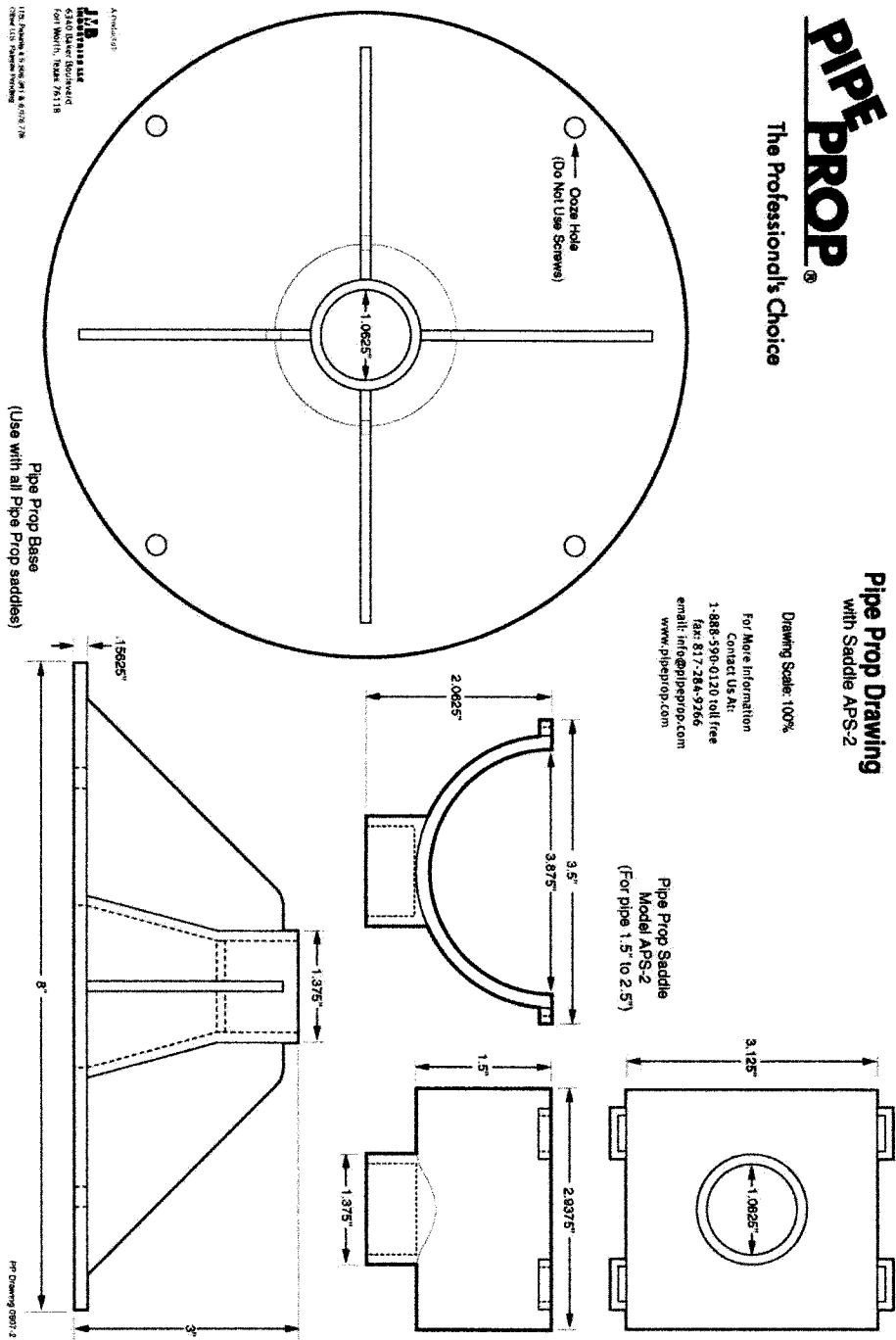
Issue #	Date	Pages	Revision Description (if applicable)
Original	09/28/2015	4	NA

JMB-003-02-02 PRI-CMT Accreditations: IAS TL-189; Miami-Dade 11-0429.05; Florida TST5878; Los Angeles TA24819; CRRC

The test results, opinions, or interpretations are based on the material supplied by the client. This report is for the exclusive use of stated client. No reproduction or facsimile in any form can be made without the client's permission. This report shall not be reproduced except in full without the written approval of this laboratory. PRI Construction Materials Technologies, LLC assumes no responsibility nor makes a performance or warranty statement for this material or products and processes containing this material in connection with this report



JMB-003-02-02 PRI-CMT Accreditations: IAS TL-189; Miami-Dade 11-0429.05; Florida TST5878; Los Angeles TA24819; CRRC  
 The test results, opinions, or interpretations are based on the material supplied by the client. This report is for the exclusive use of stated client. No reproduction or facsimile in any form can be made without the client's permission. This report shall not be reproduced except in full without the written approval of this laboratory. PRI Construction Materials Technologies, LLC assumes no responsibility nor makes a performance or warranty statement for this material or products and processes containing this material in connection with this report



**END OF REPORT**

JMB-003-02-02 PRI-CMT Accreditations: IAS TL-189; Miami-Dade 11-0429.05; Florida TST5878; Los Angeles TA24819; CRRC

The test results, opinions, or interpretations are based on the material supplied by the client. This report is for the exclusive use of stated client. No reproduction or facsimile in any form can be made without the client's permission. This report shall not be reproduced except in full without the written approval of this laboratory. PRI Construction Materials Technologies, LLC assumes no responsibility nor makes a performance or warranty statement for this material or products and processes containing this material in connection with this report



# CONSTRUCTION MATERIALS

## TECHNOLOGIES

### LABORATORY TEST REPORT

**Report for:** JMB Industries, LLC  
6340 Baker Blvd.  
Richland Hills, TX 76118

**Attention:** Jim Brown

<b>Product Name:</b> Pipe Prop®	<b>Manufacturer:</b> JMB Industries, LLC
<b>Project No.:</b> JMB-003-02-01	<b>Source:</b> JMB Industries, LLC
<b>Date Received:</b> July 7, 2015	<b>Dates Tested:</b> July 27, 2015

**Purpose:** Determine the impact resistance of Pipe Prop® by performing a free falling drop test of the finished product at 0°F onto structural concrete.

**Test Methods:** Testing was conducted in accordance with IAPMO IGC 298-2013 *Rooftop Support Blocks for Piping and Mechanical Equipment*. The specimen was equilibrated to 0°F and subsequently dropped onto structural concrete from a height of 48-inch. This process was repeated a total of three (3) times while changing the impact location of the specimen.

**Sampling:** Product samples provided by JMB Industries were received on July 7, 2015.

**Specimen:** The Pipe Prop® is a field assembled station. For this testing, the Pipe Prop® APS-1 was utilized with consisted of a 1.5" saddle attached to 1-inch O.D. (3/4-inch I.D.) Schedule 40 PVC pipe attached to the base. The overall height of the assembled Pipe Prop® was 10-inches. See Appendix A of this report for detailed drawings.

JMB-003-02-01 PRI-CMT Accreditations: IAS TL-189; Miami-Dade 11-0429.05; Florida TST5878; Los Angeles TA24819; CRRC

The test results, opinions, or interpretations are based on the material supplied by the client. This report is for the exclusive use of stated client. No reproduction or facsimile in any form can be made without the client's permission. This report shall not be reproduced except in full without the written approval of this laboratory. PRI Construction Materials Technologies, LLC assumes no responsibility nor makes a performance or warranty statement for this material or products and processes containing this material in connection with this report

**Results:** Table 1: Free Falling Drop Test Results for Pipe Prop® APS-1

Property	Test Method	Result	Requirement
Impact Resistance, [Pass/Fail] 0°F, after three (3) successive drops onto structural concrete	IAPMO IGC 298-2013	Pass	No visible cracking, fracture, or deformation of plastic or disengagement of foam base.

**Statement of Attestation:**

Testing was conducted in accordance with IAPMO IGC 298-2013 *Rooftop Support Blocks for Piping and Mechanical Equipment* as described herein. The laboratory test results presented in this report are representative of the material supplied.

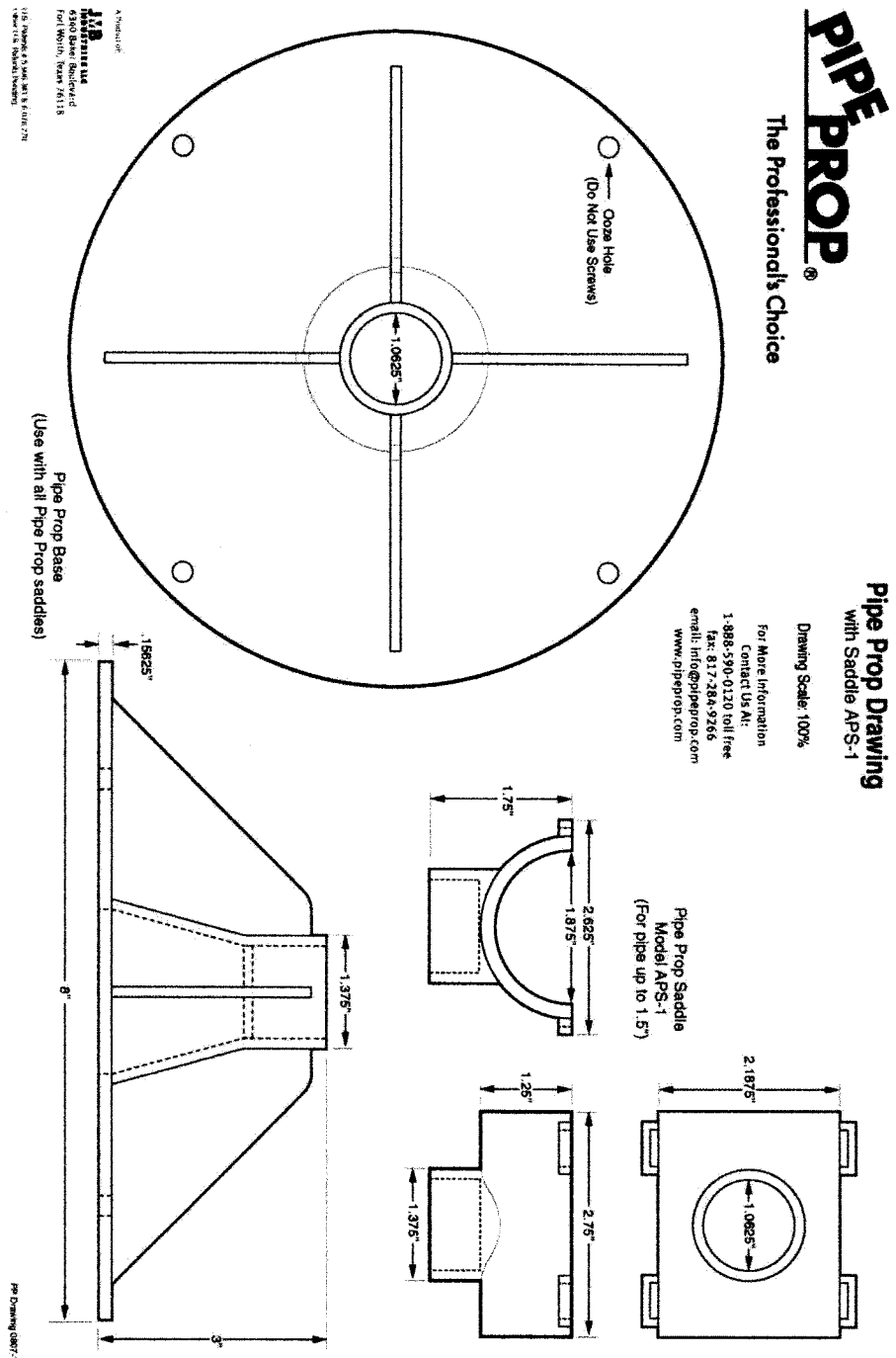
Signed:   
 \_\_\_\_\_  
 Zachary Priest, P.E.  
 Director

**Report Issue History:**

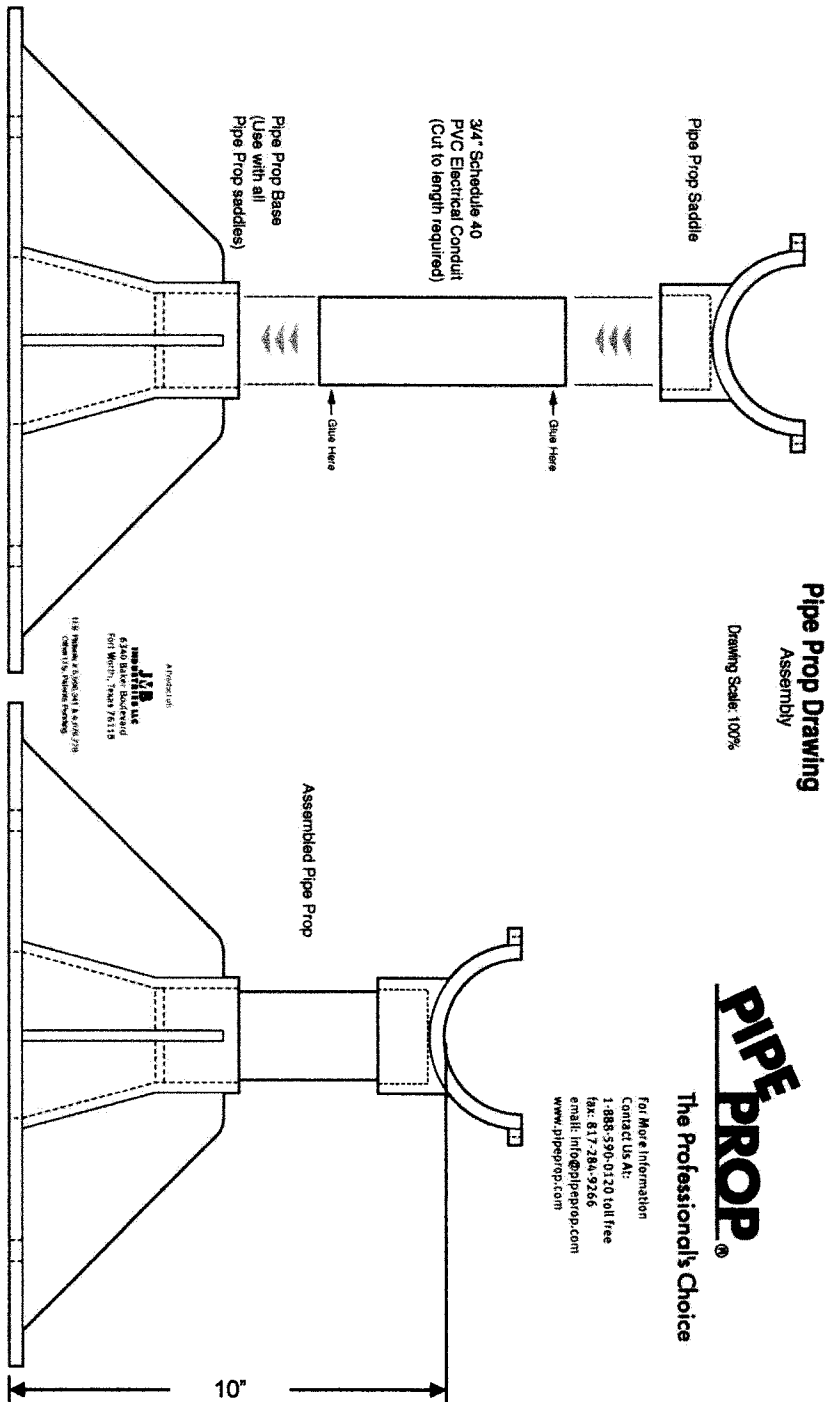
Issue #	Date	Pages	Revision Description (if applicable)
Original	09/28/2015	4	NA

JMB-003-02-01 PRI-CMT Accreditations: IAS TL-189; Miami-Dade 11-0429.05; Florida TST5878; Los Angeles TA24819; CRRC

The test results, opinions, or interpretations are based on the material supplied by the client. This report is for the exclusive use of stated client. No reproduction or facsimile in any form can be made without the client's permission. This report shall not be reproduced except in full without the written approval of this laboratory. PRI Construction Materials Technologies, LLC assumes no responsibility nor makes a performance or warranty statement for this material or products and processes containing this material in connection with this report



**JMB-003-02-01 PRI-CMT Accreditations: IAS TL-189; Miami-Dade 11-0429.05; Florida TST5878; Los Angeles TA24819; CRRC**  
 The test results, opinions, or interpretations are based on the material supplied by the client. This report is for the exclusive use of stated client. No reproduction or facsimile in any form can be made without the client's permission. This report shall not be reproduced except in full without the written approval of this laboratory. PRI Construction Materials Technologies, LLC assumes no responsibility nor makes a performance or warranty statement for this material or products and processes containing this material in connection with this report



**END OF REPORT**

**JMB-003-02-01 PRI-CMT Accreditations: IAS TL-189; Miami-Dade 11-0429.05; Florida TST5878; Los Angeles TA24819; CRRC**

The test results, opinions, or interpretations are based on the material supplied by the client. This report is for the exclusive use of stated client. No reproduction or facsimile in any form can be made without the client's permission. This report shall not be reproduced except in full without the written approval of this laboratory. PRI Construction Materials Technologies, LLC assumes no responsibility nor makes a performance or warranty statement for this material or products and processes containing this material in connection with this report





# CONSTRUCTION MATERIALS TECHNOLOGIES

## LABORATORY TEST REPORT

**Report for:** JMB Industries, LLC  
6340 Baker Blvd.  
Richland Hills, TX 76118

**Attention:** Jim Brown

<b>Product Name:</b> Pipe Prop®	<b>Manufacturer:</b> JMB Industries, LLC
<b>Project No.:</b> JMB-003-02-03	<b>Source:</b> JMB Industries, LLC
<b>Date Received:</b> July 7, 2015	<b>Dates Tested:</b> July 27 – September 22, 2015

**Purpose:** Determine the load bearing resistance of Pipe Prop® by conducting uniaxial, dead load testing for continuous eight (8) hour period at elevated temperature (158°F).

**Test Methods:** Testing was conducted in accordance with IAPMO IGC 298-2013 *Rooftop Support Blocks for Piping and Mechanical Equipment*. The specimen was equilibrated to 158°F for 1h prior to testing. The test load was then applied, at temperature, and maintained, continuously, for an eight (8) hour period. The creep rate is then calculated and reported for the final hour of testing.

Note – the testing is modified from the IAPMO IGC 298-2013 in the following manner:

- 1) Radiant heat was not used. Instead, the sample was placed in a heated chamber, equilibrated to the test temperature, before and during load application.
- 2) The load applied to sample was varied based on the height of the assembled Pipe Prop®. For a 10" tall Pipe Prop®, 90 lbf was applied. For a 6" tall Pipe Prop®, 190 lbf was applied. For a 3" tall Pipe Prop, 1,000 lbf was applied.

**Sampling:** Product samples provided by JMB Industries were received on July 7, 2015.

**Specimen:** The Pipe Prop® is a field assembled station. For this testing, the Pipe Prop® APS-1 was utilized with consisted of a 1.5" saddle attached to 1-inch O.D. (3/4-inch I.D.) Schedule 40 PVC pipe attached to the base. See Appendix A of this report for detailed drawings.

JMB-003-02-03 PRI-CMT Accreditations: IAS TL-189; Miami-Dade 11-0429.05; Florida TST5878; Los Angeles TA24819; CRRC

The test results, opinions, or interpretations are based on the material supplied by the client. This report is for the exclusive use of stated client. No reproduction or facsimile in any form can be made without the client's permission. This report shall not be reproduced except in full without the written approval of this laboratory. PRI Construction Materials Technologies, LLC assumes no responsibility nor makes a performance or warranty statement for this material or products and processes containing this material in connection with this report

**Results:** Table 1: Load Bearing Resistance for Pipe Prop® APS-1

Property	Test Method	Results (Pass/Fail)	Requirement
Load Bearing Resistance; 8 hr uniaxial dead load applied at 158°F;	IAPMO IGC 298-2013		
90 lbf load applied to 10" tall Pipe Prop®		Pass <sup>1</sup>	Average creep rate over the final hour of testing ≤ 0.005 in./hr
190 lbf load applied to 6" tall Pipe Prop®		Pass <sup>2</sup>	
90 lbf load applied to 3" tall Pipe Prop®		Pass <sup>3</sup>	

Notes: 1) Creep rate over the last hour was 0.003 in./hr  
 2) Creep rate over the last hour was 0.0007 in./hr  
 3) Creep rate over the last hour was 0.003 in./hr

**Statement of Attestation:**

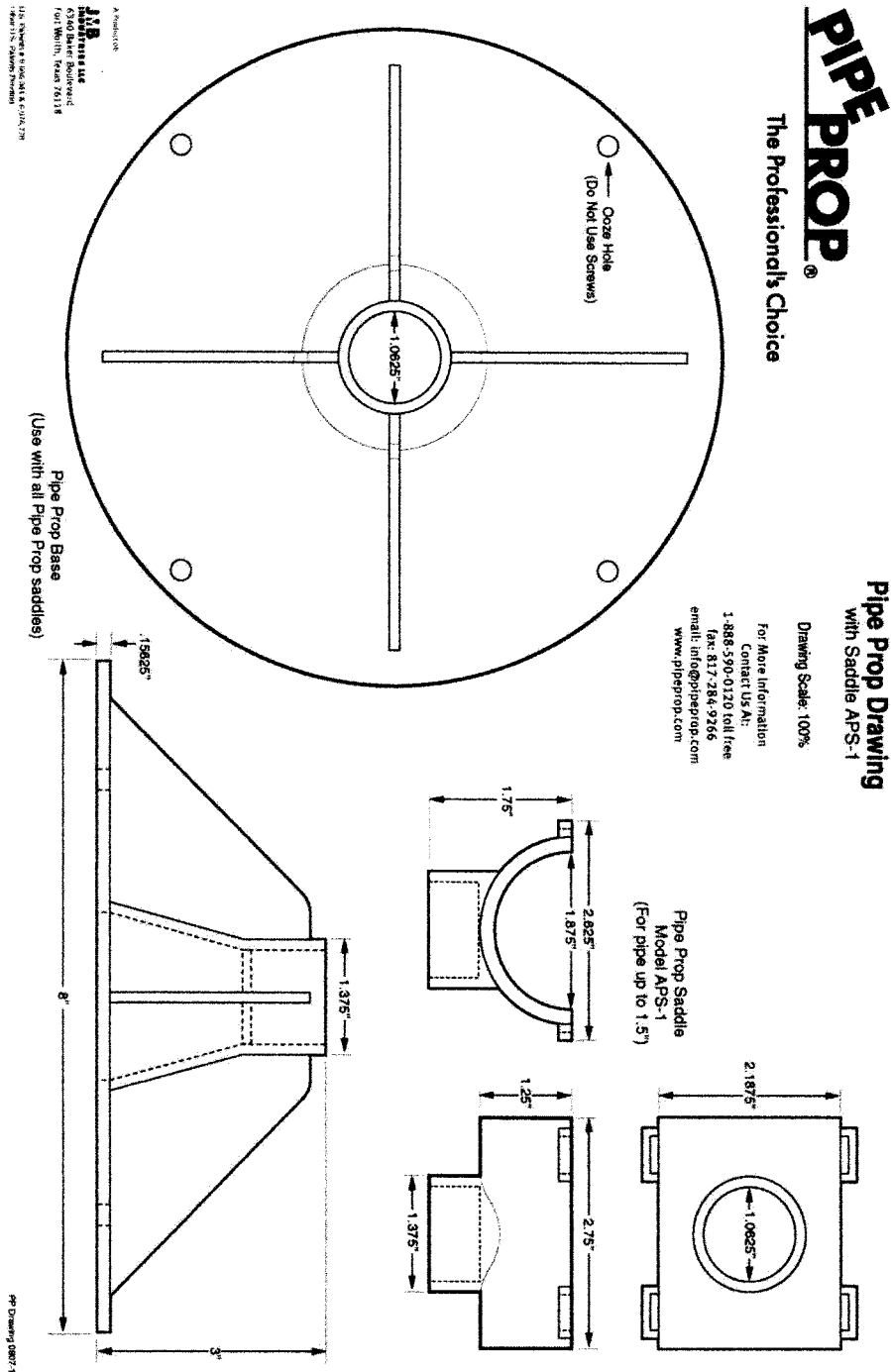
Testing was conducted in accordance with IAPMO IGC 298-2013 *Rooftop Support Blocks for Piping and Mechanical Equipment* with modifications described herein. The laboratory test results presented in this report are representative of the material supplied.

Signed:   
 Zachary Priest, P.E.  
 Director

**Report Issue History:**

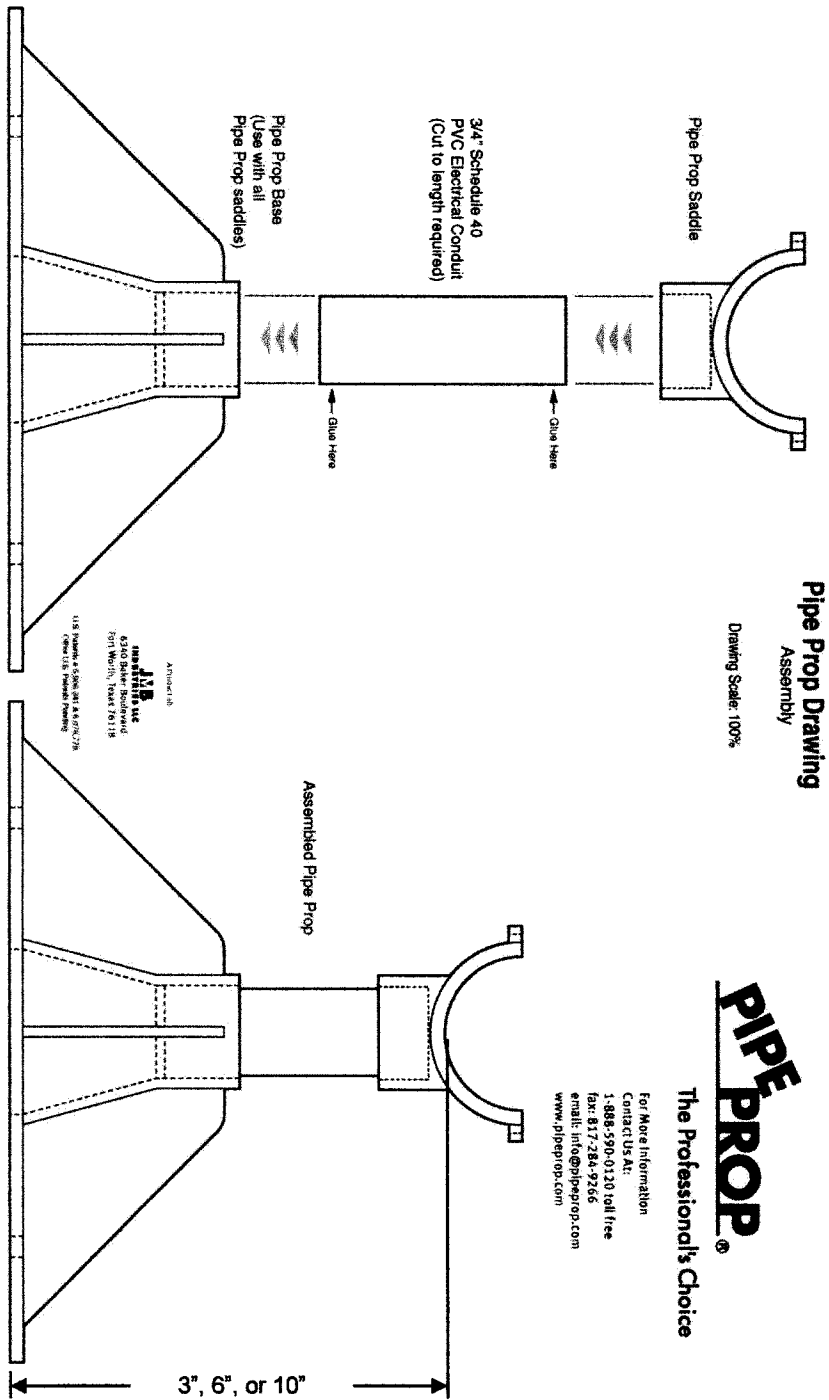
Issue #	Date	Pages	Revision Description (if applicable)
Original	09/28/2015	4	NA

JMB-003-02-03 PRI-CMT Accreditations: IAS TL-189; Miami-Dade 11-0429.05; Florida TST5878; Los Angeles TA24819; CRRC  
 The test results, opinions, or interpretations are based on the material supplied by the client. This report is for the exclusive use of stated client. No reproduction or facsimile in any form can be made without the client's permission. This report shall not be reproduced except in full without the written approval of this laboratory. PRI Construction Materials Technologies, LLC assumes no responsibility nor makes a performance or warranty statement for this material or products and processes containing this material in connection with this report



JMB-003-02-03 PRI-CMT Accreditations: IAS TL-189; Miami-Dade 11-0429.05; Florida TST5878; Los Angeles TA24819; CRRC

The test results, opinions, or interpretations are based on the material supplied by the client. This report is for the exclusive use of stated client. No reproduction or facsimile in any form can be made without the client's permission. This report shall not be reproduced except in full without the written approval of this laboratory. PRI Construction Materials Technologies, LLC assumes no responsibility nor makes a performance or warranty statement for this material or products and processes containing this material in connection with this report



**END OF REPORT**

JMB-003-02-03 PRI-CMT Accreditations: IAS TL-189; Miami-Dade 11-0429.05; Florida TST5878; Los Angeles TA24819; CRRC

The test results, opinions, or interpretations are based on the material supplied by the client. This report is for the exclusive use of stated client. No reproduction or facsimile in any form can be made without the client's permission. This report shall not be reproduced except in full without the written approval of this laboratory. PRI Construction Materials Technologies, LLC assumes no responsibility nor makes a performance or warranty statement for this material or products and processes containing this material in connection with this report

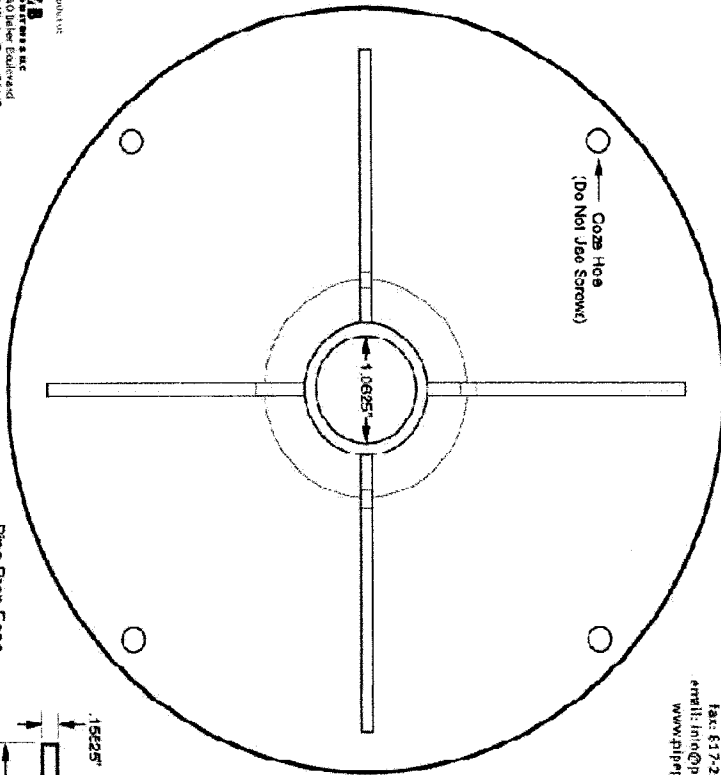
# PIPE PROP<sup>®</sup>

The Professional's Choice

## Pipe Prop Drawing with Saddles APS-1

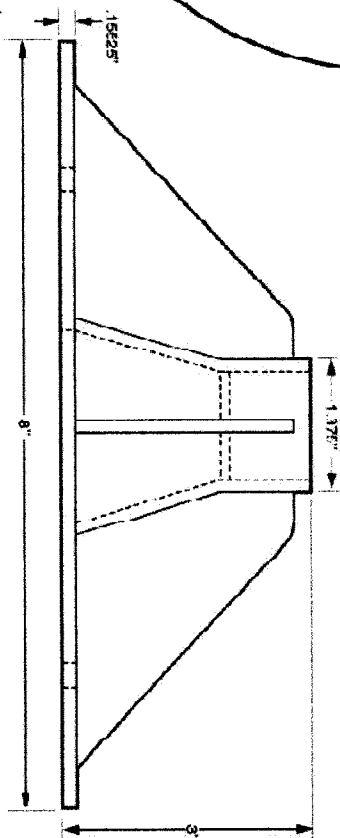
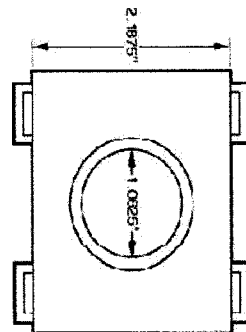
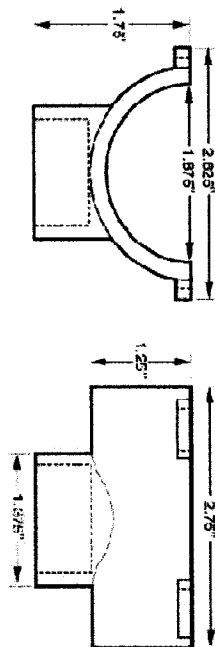
Drawing Scale: 1:00%

For More Information  
Contact: US 44:  
1-888-590-0122 Toll Free  
Fax: 817-284-9266  
email: info@pipeprop.com  
www.pipeprop.com



Pipe Prop Base  
(Use with all Pipe Prop saddles)

Pipe Prop Saddle  
Model APS-1  
(For pipe up to 1.5")



IF ORDERING 1

APPROX. 100%  
M.B.  
MANUFACTURED BY  
2,400 Dallas Boulevard  
Fort Worth, Texas 76119  
U.S. Patent # 4,968,414 & 4,908,775  
2004 U.S. Registered

# PIPEPROP®

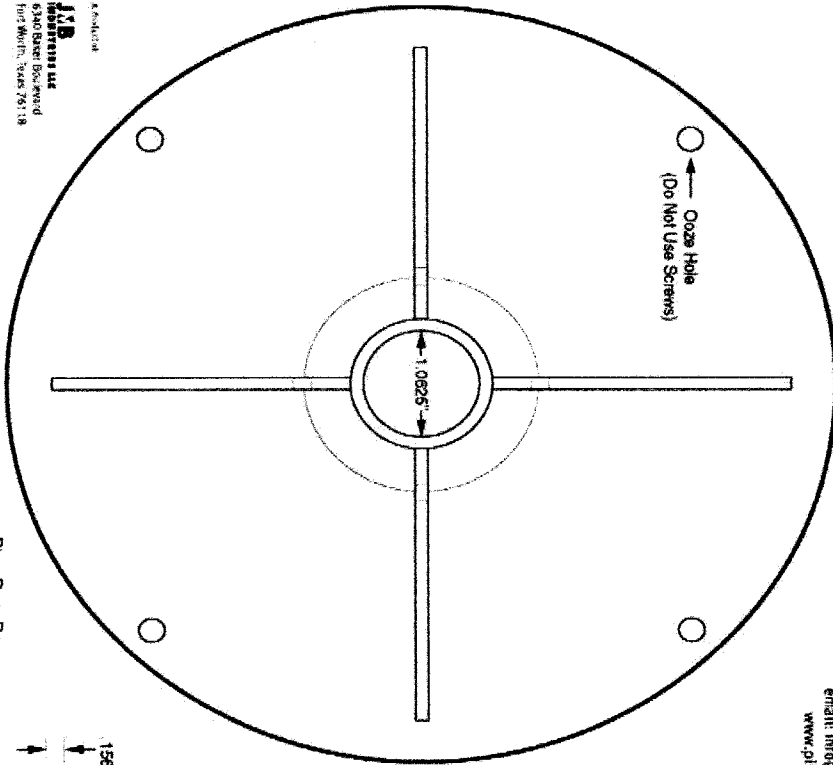
The Professional's Choice

## Pipe Prop Drawing with Saddle APS-2

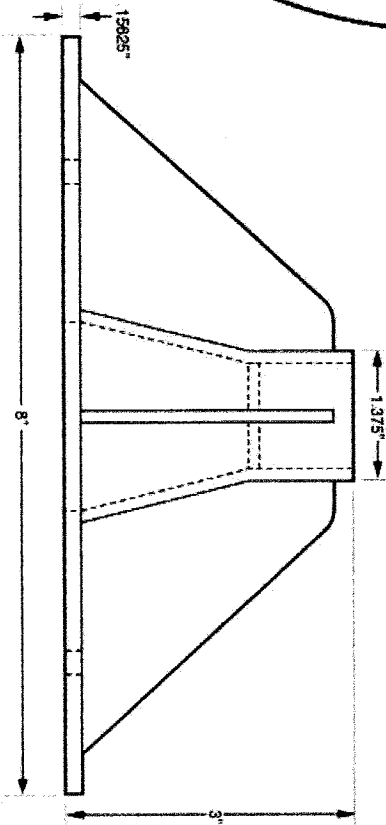
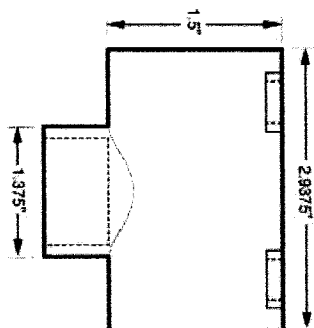
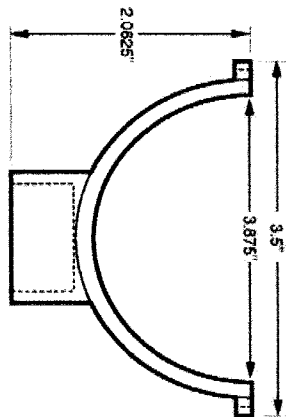
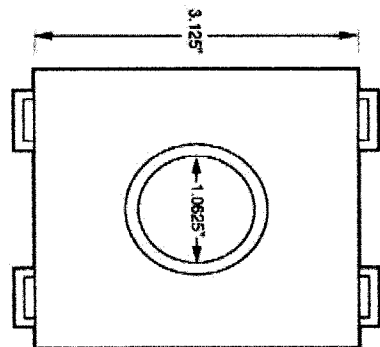
Drawing Scale: 100%

For More Information  
Contact US At:  
1-888-590-0120 toll free  
Fax: 817-284-9266  
email: info@pipeprop.com  
www.pipeprop.com

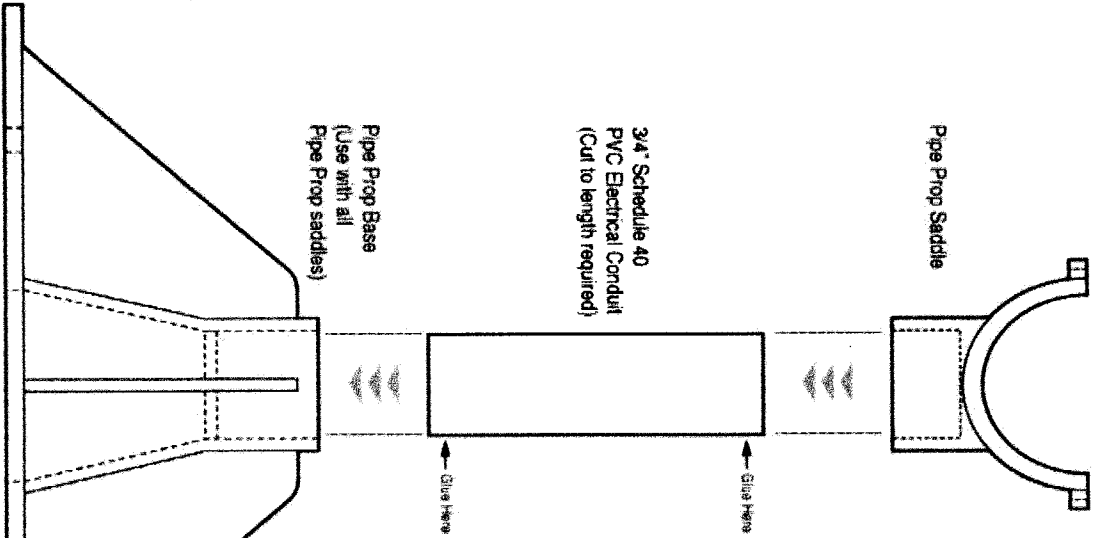
Pipe Prop Saddle  
Model APS-2  
(For pipe 1.5" to 2.5")



Pipe Prop Base  
(Use with all Pipe Prop saddles)



KALAMAZOO  
**IAPMO**  
INDUSTRIES LLC  
6340 River Drive, West  
Ford Worth, Texas 75178  
USA  
Tel: 888-590-0120  
Fax: 817-284-9266  
www.pipeprop.com

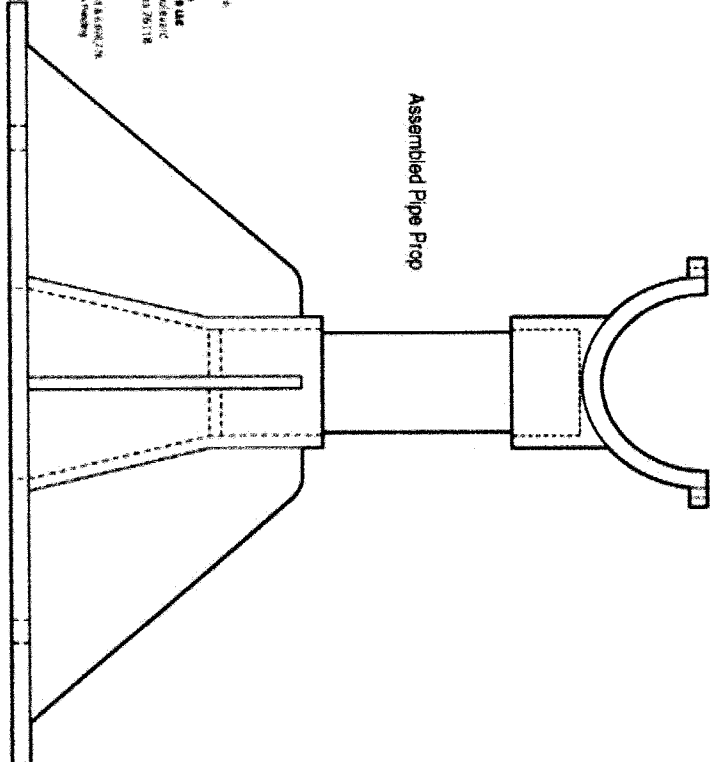


**Pipe Prop Drawing**  
Assembly

Drawing Scale: 100%

APPROVED  
**JMB**  
 CONSULTANTS INC.  
 5340 Birch Street  
 Fort Worth, Texas 76118  
 (817) 352-1111  
 www.jmbconsultants.com

**Assembled Pipe Prop**



**PIPE PROP**<sup>®</sup>  
 The Professional's Choice

For More Information  
 Contact Us At:  
 1-888-596-0120 toll free  
 Fax: 817-284-9755  
 email: info@pipeprop.com  
 www.pipeprop.com